

Rhino 6000

Advanced Labeling Tool with PC Connectivity



Quick Start Guide	1
Guía rápida de inicio	7
Guide de démarrage rapide	15
Guia de Início Rápido	23

Quick Start Guide

Follow these steps to install your RHINO 6000 label printer and software, and print your first label.

1. Unpacking your printer

NOTE Do not plug the printer into your computer until asked to do so during the software installation.

1. Unpack your label printer and save the packing materials.
2. Make sure you have all the items shown in Figure 1.

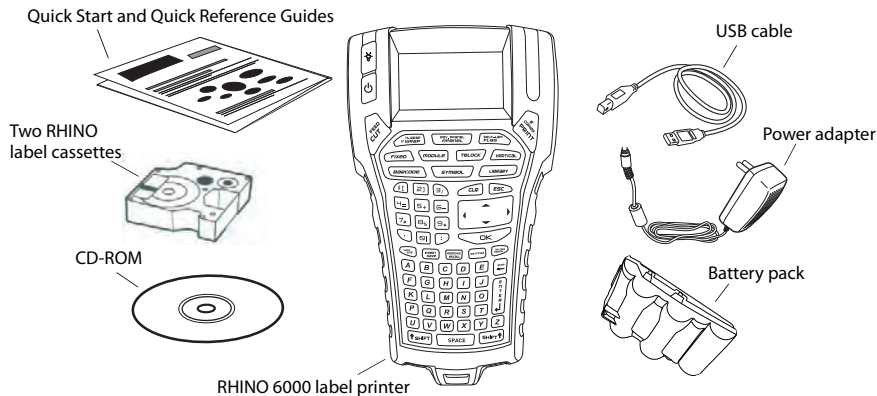


Figure 1

2. Connecting the power

The label printer can operate using the rechargeable battery pack or the AC power adapter. For temporary backup power, six AA alkaline batteries can be used.

To charge the battery pack the first time you use the printer, insert the battery pack and plug in the power adapter. Charging the battery pack the first time takes approximately eight hours. Recharging the battery pack will take approximately two hours.

To insert the battery pack

1. Remove the battery compartment cover. See Figure 2.
2. Insert the battery pack into the battery compartment.
3. Replace the battery compartment cover.

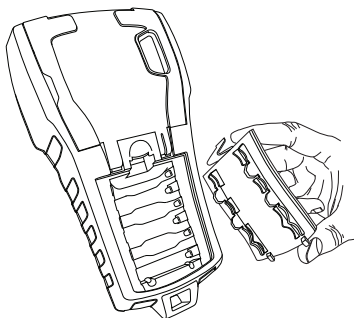


Figure 2

To connect the power adapter

1. Plug the power adapter into the power connector on the bottom of the printer. See Figure 3.
2. Plug the other end of the power adapter into a power outlet.

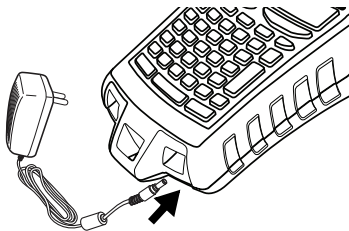


Figure 3

3. Inserting the label cassette

Your printer comes with two RHINO label cassettes.

Visit www.rhinolabeling.com for information about purchasing additional label cassettes.

To insert the label cassette

1. Lift the label cassette cover to open the label compartment. See Figure 4.
2. Make sure the label and ribbon are taut across the mouth of the cassette and that the label passes between the guideposts. If necessary, turn the spool clockwise to tighten the ribbon.
3. Insert the cassette and press gently until the cassette is eased into place.
4. Make sure the two blue clips lock the cassette in place. Refer to the label on the cassette.
5. Close the label cassette cover.

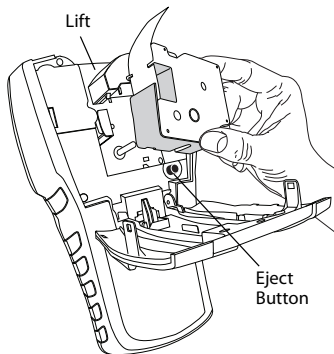


Figure 4

To remove the label cassette

1. Lift the label cassette cover to open the label cassette compartment.
2. Press the Eject button. The label cassette is automatically lifted.
3. Replace the cassette as described above.

4. Connecting the printer to your computer

Your printer connects to your computer using the USB connection located on the top of the printer.

NOTE Do not connect the printer to your computer until prompted to do so during the software installation.

To connect the printer to your computer

1. Plug the USB cable into the USB port on the bottom of the printer. See Figure 5.
2. Plug the USB cable into a USB port **ONLY** when prompted during the software installation.

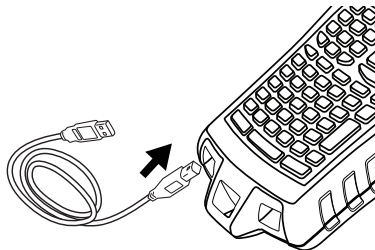


Figure 5

5. Installing the Software


To install the software

1. Insert the RHINO Connect Software CD into your CD-ROM drive. After a few seconds, the installation screen appears. If the installation screen does not appear:
 - a. Click **Start** and then **Run** on the Windows taskbar. The Run dialog box appears.
 - b. Enter **D:\setup.exe** (where D is the CD-ROM drive letter) and click **OK**.
2. Follow the on-screen instructions.
3. When prompted by the installer, plug the USB cable into a USB port.

6. Printing your first label with the printer

You are now ready to print your first label. The first time you turn on the printer, you are asked to select your language and units of measure. You are also asked to select the width of the tape cassette currently inserted in the printer.

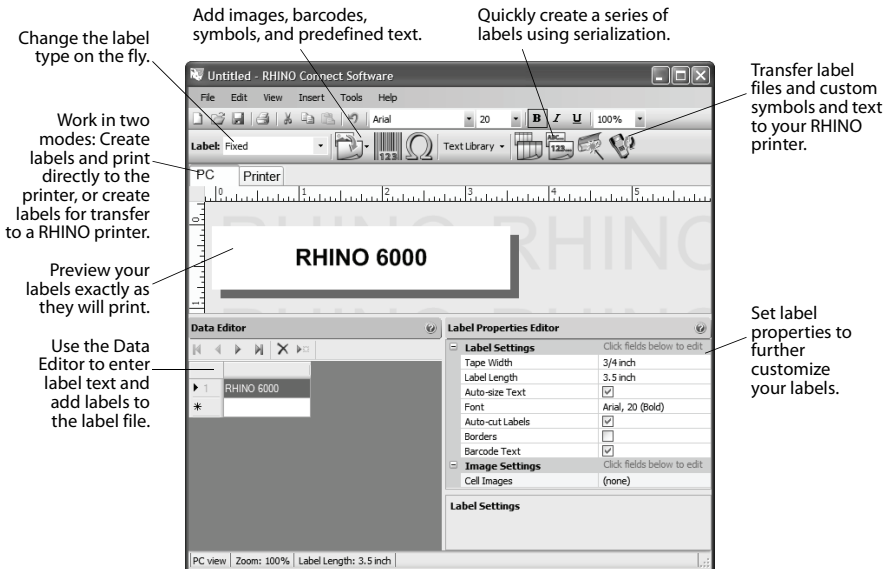
To print your first label

1. Press  to turn on the power.
2. Use the up and down arrow keys to select the language you wish to use and press **OK**.
3. Use the up and down arrow keys to select the units of measure you wish to use and press **OK**.
4. Select the tape width of the tape cassette currently inserted in the printer and press **OK**.
5. Enter some text for your label using the alphanumeric keys.
6. Press **PRINT**.
7. Press **CUT** and remove the label.

Congratulations! You have printed your first label.

7. Using RHINO Connect Software

The following figure shows some of the many features available in RHINO Connect Software.



For complete details on how to use the software, refer to the RHINO Connect Software online help.



A ***NewellRubbermaid*** Brand

Distributed by/Distribué par/Distribuido por:

DYMO, Atlanta, GA 30328 ©2010 Sanford, L.P. www.dymo.com

Imported into Canada by/Importé au Canada par Sanford Canada L.P., Oakville, ON L6J 3J3

En México importado y distribuido por: Newell Rubbermaid de México S. de R.L. de C.V.

Av. Vasco de Quiroga 3000 P. Plaza 1, Col. Santa Fe, Del. Alvaro Obregón C.P. 01210, México, D.F.

SANFORD BRANDS VENEZUELA LLC. Rif: J-30560396-0.

Calle Gustav Dalen, Zona Industrial La Hamaca, Maracay Edo. Aragua.

Newell Rubbermaid Latin America, 273 Ponce de Leon Ave., Scotiabank Bldg. Suite #1405

San Juan PR 00917. Atención al consumidor: (787) 622 9017