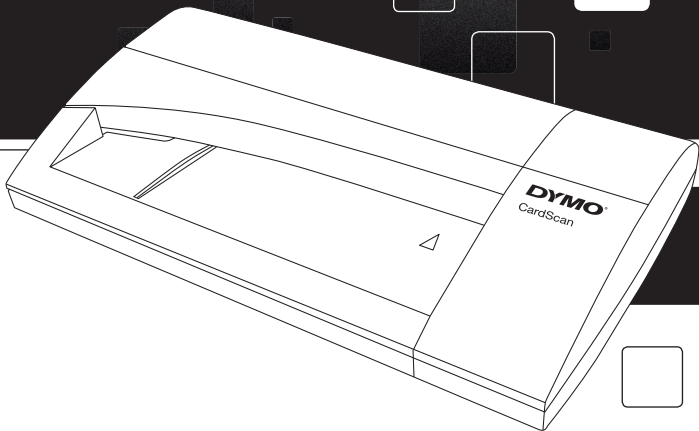


**DYMO<sup>®</sup>**



Quick Start Guide

**CardScan<sup>®</sup>**

IC

Identification Scanner for Image Capture



## DYMO CardScan Executive

This equipment has been tested and found to comply with the limits for a Class B digital device, pursuant to Part 15 of the FCC (Federal Communications Committee) rules. These limits are designed to provide reasonable protection against harmful interference in a residential installation. This equipment generates, uses, and can radiate radio frequency energy, and, if not installed and used in accordance with the instructions, may cause harmful interference to radio communications. However, there is no guarantee that interference will not occur in a particular installation. If this equipment does cause harmful interference to radio or television reception, which can be determined by turning the equipment off and on, the user is encouraged to try correcting the interference by one or more of the following measures:

- Reorient the receiving antenna.
- Increase the separation between the equipment and the receiver.
- Connect the equipment to an outlet on a circuit different from that to which the receiver is connected.
- Use shielded cables to connect this device to computers.
- Consult the dealer or an experienced radio/TV technician for help.

You may find helpful the following booklet, prepared by the FCC: Interference Handbook. This booklet is available from the U.S. Government Printing Office, Superintendent of Documents, Washington, DC 20402-9325.

Note: Changes or modifications to this unit not expressly approved by the party responsible for compliance could void the user's authority to operate the equipment and void the manufacturer's warranty.

© 2011 Sanford, L.P. All rights reserved.

No part of this document or the software may be reproduced or transmitted in any form or by any means or translated into another language without the prior written consent of Sanford, L.P.

DYMO, the DYMO logo, and CardScan are registered trademarks of Sanford, L.P. All other trademarks are the property of their respective holders.

# Quick Start Guide

Follow these steps to install the DYMO CardScan Image Capture software and scanner.

## Unpacking your CardScan Scanner

- 1 Unpack your scanner and save the packing materials.
- 2 Make sure you have all the items shown in Figure 1.

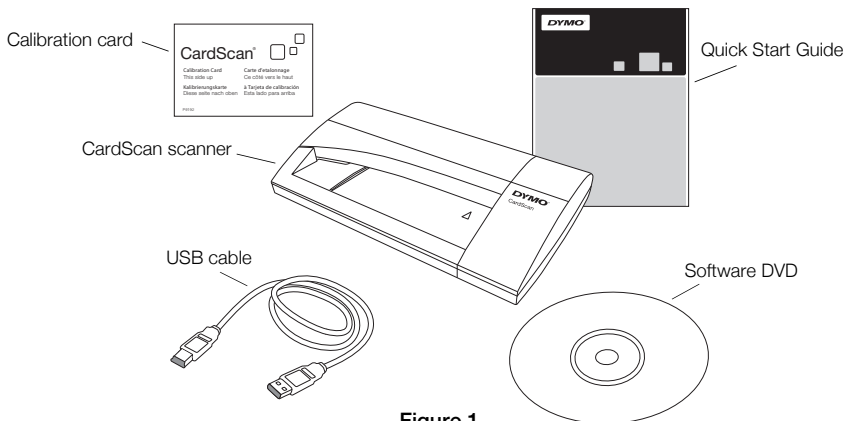


Figure 1

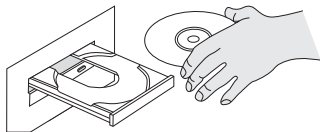
## Installing the Software

This section describes how to install the CardScan Image Capture software. Depending on your system, you may be asked to restart your computer at the end of the installation.

**NOTE** To install the CardScan Image Capture software, you must be logged in as Administrator.

### To install the software

- 1 Close any open applications.
- 2 Insert the CardScan Image Capture CD into your DVD drive. After a few seconds, the installation screen appears.



**Figure 2**

If the installation screen does not appear, do the following:

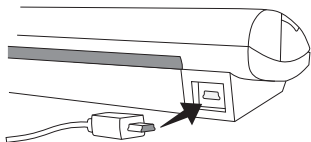
- a. On the Windows taskbar, click **Start** and then choose **Run**. The Run dialog box appears.
  - b. Enter **D:\setup.exe** (where D is the letter assigned to the DVD drive), and then click **OK**.
- 3 When prompted, enter the product key located on the DVD sleeve, and then click **Continue** to complete the installation.
- NOTE** If you choose not to enter the product key at this time, you will begin a 30-day trial period.
- 4 Select **Complete** to install the entire application, or select **Custom** to install specific program features.

## Connecting Your CardScan Scanner

### To connect your CardScan scanner

- 1 Plug the USB cable into the USB port on the back of the scanner.
- 2 Connect the other end of the USB cable into an available USB port on your computer.

**NOTE** If the scanner was already connected, unplug the scanner and then plug the scanner in again.




**Figure 3**

## Starting CardScan Image Capture

The first time you start the software, you are asked to register the product.

### To start CardScan Image Capture for the first time

1 Do one of the following:

- Double-click  on your desktop.
- Click **Start**, then **Programs>DYMO>CardScan Image Capture>DYMO CardScan Image Capture**.

The CardScan Image Capture software is activated automatically and the DYMO Product Registration dialog box appears.

2 In the **DYMO Product Registration** dialog box, click **Register Now** and then follow the on-screen instructions to register the software.

**NOTE** You can register the software later by choosing **Register** from the **Help** menu.

For complete details on using the software, refer to the online Help.

If you need further assistance, contact Customer Support at (877) 724-8324. You can also obtain support at [www.dymo.com](http://www.dymo.com).



**DYMO<sup>®</sup>**

A *NewellRubbermaid* Brand

**DISTRIBUTED BY:**  
DYMO, ATLANTA, GA 30328  
800-426-7827: [WWW.DYMO.COM](http://WWW.DYMO.COM)  
©2011 SANFORD, L.P.

11-0269



1818279